

CT37 / CT37 HC MOBILE COMPUTER ACCESSORIES GUIDE

Accessories Guide

Honeywell

TABLE OF CONTENTS

2	CHARGERS
2	Chargers for non-booted terminals
5	Chargers for booted terminals
8	Chargers for batteries
9	Healthcare chargers
10	POWER SUPPLIES
11	SCAN HANDLES
12	OTHER ACCESSORIES
13	SD CARDS
14	AC LINE CORDS

CHARGERS

For non-booted terminals



CT37-CB-UVN-0

CT37/CT30 XP non-booted charging base, standard

Kit includes 4 bay charging base, power supply, must order power cord separately. For recharging up to 4 computers, compatible with CT37 (w/ standard and extended battery) and CT30 XP.



CT37-CB-UVN-1

CT37/CT30 XP non-booted charging base, for US

Kit includes 4 bay charging base, power supply, US power cord. For recharging up to 4 computers, compatible with CT37 (w/ standard and extended battery) and CT30 XP.



CT37-CB-UVN-2

CT37/CT30 XP non-booted charging base, for EU

Kit includes 4 bay charging base, power supply, EU power cord. For recharging up to 4 computers, compatible with CT37 (w/ standard and extended battery) and CT30 XP.



CT37-CB-UVN-3

CT37/CT30 XP non-booted charging base, for UK

Kit includes 4 bay charging base, power supply, UK power cord. For recharging up to 4 computers, compatible with CT37 (w/ standard and extended battery) and CT30 XP.



CT37-NB-UVN-0

CT37/CT30 XP non-booted net base, standard

Kit includes net base and power supply, must order power cord separately. For Ethernet comms and recharging up to 4 computers, compatible with CT37 (w/ standard and extended battery) and CT30 XP.



CT37-NB-UVN-1

CT37/CT30 XP non-booted net base, for US

Kit includes net base and power supply, US power cord. For Ethernet comms and recharging up to 4 computers, compatible with CT37 (w/ standard and extended battery) and CT30 XP.



CT37-NB-UVN-2

CT37/CT30 XP non-booted net base, for EU

Kit includes net base and power supply, EU power cord. For Ethernet comms and recharging up to 4 computers, compatible with CT37 (w/ standard and extended battery) and CT30 XP.



CT37-NB-UVN-3

CT37/CT30 XP non-booted net base, for UK

Kit includes net base and power supply, UK power cord. For Ethernet comms and recharging up to 4 computers, compatible with CT37 (w/ standard and extended battery) and CT30 XP.



CT37-HB-UVN-0

CT37 non-booted home base, standard

Kit includes home base, power supply, must order power cord separately. For recharging one computer (CT37 with standard and extended battery or CT30 XP) and a spare battery (CT37 only). Support USB client via USB Type B connector. Can not recharge CT30 XP spare battery.

CHARGERS, Continued

For non-booted terminals



CT37-HB-UVN-1

CT37 non-booted home base, for US

Kit includes home base, power supply, US power cord. For recharging one computer (CT37 with standard and extended battery or CT30 XP) and a spare battery (CT37 only). Support USB client via USB Type B connector. Can not recharge CT30 XP spare battery.



CT37-HB-UVN-2

CT37 non-booted home base, for EU

Kit includes home base, power supply, EU power cord. For recharging one computer (CT37 with standard and extended battery or CT30 XP) and a spare battery (CT37 only). Support USB client via USB Type B connector. Can not recharge CT30 XP spare battery.



CT37-HB-UVN-3

CT37 non-booted home base, for UK

Kit includes home base, power supply, UK power cord. For recharging one computer (CT37 with standard and extended battery or CT30 XP) and a spare battery (CT37 only). Support USB client via USB Type B connector. Can not recharge CT30 XP spare battery.



CT37-EB-UVN-0

CT37 non-booted ethernet base, standard

Kit includes ethernet home base, power supply, must order power cord separately. For recharging one computer (CT37 with standard and extended battery or CT30 XP) and one spare battery (CT37 only). Includes Ethernet communications. Supports USB client via USB Type B connector. Can not recharge CT30 XP spare battery.



CT37-EB-UVN-1

CT37 non-booted ethernet base, for US

Kit includes ethernet home base, power supply, US power cord. For recharging one computer (CT37 with standard and extended battery or CT30 XP) and one spare battery (CT37 only). Includes Ethernet communications. Supports USB client via USB Type B connector. Can not recharge CT30 XP spare battery.



CT37-EB-UVN-2

CT37 non-booted ethernet base, for EU

Kit includes ethernet home base, power supply, EU power cord. For recharging one computer (CT37 with standard and extended battery or CT30 XP) and one spare battery (CT37 only). Includes Ethernet communications. Supports USB client via USB Type B connector. Can not recharge CT30 XP spare battery.



CT37-EB-UVN-3

CT37 non-booted ethernet base, for UK

Kit includes ethernet home base, power supply, UK power cord. For recharging one computer (CT37 with standard and extended battery or CT30 XP) and one spare battery (CT37 only). Includes Ethernet communications. Supports USB client via USB Type B connector. Can not recharge CT30 XP spare battery.



CT37-DB-UVN-0

CT37/CT30 XP non-booted display base, standard

Kit includes display base, power supply, must order power cord separately. For Charging one computer, connection with an external display, and extending I/O for HDMI, Ethernet comm and 3 USB ports, compatible with CT37(w/ standard and extended battery) and CT30 XP.



CT37-DB-UVN-1

CT37/CT30 XP non-booted display base, for US

Kit includes display base, power supply, US power cord. For Charging one computer, connection with an external display, and extending I/O for HDMI, Ethernet comm and 3 USB ports, compatible with CT37(w/standard and extended battery) and CT30 XP.

CHARGERS, Continued

For non-booted terminals



CT37-DB-UVN-2

CT37/CT30 XP non-booted display base, for EU

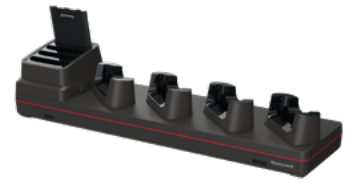
Kit includes display base, power supply, EU power cord. For Charging one computer, connection with an external display, and extending I/O for HDMI, Ethernet comm and 3 USB ports, compatible with CT37(w/ standard and extended battery) and CT30 XP.



CT37-DB-UVN-3

CT37/CT30 XP non-booted display base, for UK

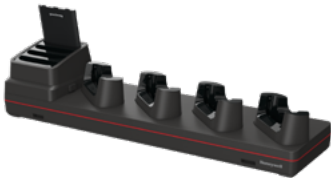
Kit includes display base, power supply, UK power cord. For Charging one computer, connection with an external display, and extending I/O for HDMI, Ethernet comm and 3 USB ports, compatible with CT37 (w/ standard and extended battery) and CT30 XP.



CT37-5CB-UVN-BAT-0

CT37/CT30 XP 5-bay charging base, standard

Kit includes 5-bay charging base, power supply, no power cord. Charge up to 4 pcs computers and 4 pcs batteries, compatible with CT37(w/ standard and extended battery) and CT30 XP



CT37-5CB-UVN-BAT-1

CT37/CT30 XP 5-bay charging base, US power cord

Kit includes 5-bay charging base, power supply, US power cord. Charge up to 4 pcs computers and 4 pcs batteries, compatible with CT37 (w/ standard and extended battery) and CT30 XP.



CT37-UCP-N

CT37/CT30 XP non-booted universal cup

Kit includes a cup to be used for CT37(w/ standard and extended battery) and CT30 XP. Charging docks, power supply and cables must be ordered separately.



CT37-5CB-UVN-0

CT37/CT30 XP non-booted charging base, standard

Kit includes 5 bay charging base, power supply, must order power cord separately. For recharging up to 5 computers, compatible with CT37(w/ standard and extended battery) and CT30 XP.



CT37-5CB-UVN-1

CT37/CT30 XP non-booted charging base, for US

Kit includes 5 bay charging base, power supply, US power cord. For recharging up to 5 computers, compatible with CT37(w/standard and extended battery) and CT30 XP.



CT37-5CB-UVN-2

CT37/CT30 XP non-booted charging base, for EU

Kit includes 5 bay charging base, power supply, EU power cord. For recharging up to 5 computers, compatible with CT37 (w/ standard and extended battery) and CT30 XP.



CT37-5CB-UVN-3

CT37/CT30 XP non-booted charging base, for UK

Kit includes 5 bay charging base, power supply, UK power cord. For recharging up to 5 computers, compatible with CT37 (w/ standard and extended battery) and CT30 XP.

CHARGERS, Continued

For booted terminals



CT30P-CB-UVB-0

CT37/CT30 XP booted charging base, standard

Kit includes 4 bay charger, power supply, must order power cord separately. For recharging up to 4 computers, compatible with CT30 XP and CT37 (w/standard and extended battery) with protective boot attached.



CT30P-CB-UVB-1

CT37/CT30 XP booted charging base, for US

Kit includes 4 bay charger, power supply, US power cord. For recharging up to 4 computers, compatible with CT30 XP and CT37(w/standard and extended battery) with protective boot attached.



CT30P-CB-UVB-2

CT37/CT30 XP booted charging base, for EU

Kit includes 4 bay charger, power supply, EU power cord. For recharging up to 4 computers, compatible with CT30 XP and CT37 (w/standard and extended battery) with protective boot attached.



CT30P-CB-UVB-3

CT37/CT30 XP booted charging base, for UK

Kit includes 4 bay charger, power supply, UK power cord. For recharging up to 4 computers, compatible with CT30 XP and CT37 (w/standard and extended battery) with protective boot attached.



CT30P-NB-UVB-0

CT37/CT30 XP booted net base, standard

Kit includes net base, power supply, must order power cord separately. For Ethernet communications and recharging up to 4 computers, compatible with CT30 XP and CT37(w/standard and extended battery) with protective boot attached.



CT30P-NB-UVB-1

CT37/CT30 XP booted net base, for US

Kit includes net base, power supply, US power cord. For Ethernet communications and recharging up to 4 computers, compatible with CT30 XP and CT37(w/standard and extended battery) with protective boot attached.



CT30P-NB-UVB-2

CT37/CT30 XP booted net base, for EU

Kit includes net base, power supply, EU power cord. For Ethernet communications and recharging up to 4 computers, compatible with CT30 XP and CT37(w/standard and extended battery) with protective boot attached.



CT30P-NB-UVB-3

CT37/CT30 XP booted net base, for UK

Kit includes net base, power supply, UK power cord. For Ethernet communications and recharging up to 4 computers, compatible with CT30 XP and CT37 (w/standard and extended battery) with protective boot attached.



CT37-HB-UVB-0

CT37 booted home base, standard

Kit includes home base, power supply, must order power cord separately. For recharging one computer, CT30 XP or CT37(w/standard and extended battery) with protective boot attached, and a spare battery (CT37 only). Support USB client via USB Type B connector. Can not recharge CT30 XP spare battery.

CHARGERS, Continued

For booted terminals



CT37-HB-UVB-1

CT37 booted home base, for US

Kit includes home base, power supply, US power cord. For recharging one computer, CT30 XP or CT37(w/standard and extended battery) with protective boot attached, and a spare battery (CT37 only). Support USB client via USB Type B connector. Can not recharge CT30 XP spare battery.



CT37-HB-UVB-2

CT37 booted home base, for EU

Kit includes home base, power supply, EU power cord. For recharging one computer, CT30 XP or CT37(w/standard and extended battery) with protective boot attached, and a spare battery (CT37 only). Support USB client via USB Type B connector. Can not recharge CT30 XP spare battery.



CT37-HB-UVB-3

CT37 booted home base, for UK

Kit includes home base, power supply, UK power cord. For recharging one computer, CT30 XP or CT37(w/standard and extended battery) with protective boot attached, and a spare battery (CT37 only). Support USB client via USB Type B connector. Can not recharge CT30 XP spare battery.



CT37-EB-UVB-0

CT37 booted ethernet base, standard

Kit includes ethernet home base, power supply, must order power cord separately. For recharging one computer, CT30 XP or CT37(w/standard and extended battery) with protective boot attached, and a spare battery (CT37 only). Support USB client via USB Type B connector. Can not recharge CT30 XP spare battery.



CT37-EB-UVB-1

CT37 booted ethernet base, for US

Kit includes ethernet home base, US power cord. For recharging one computer, CT30 XP or CT37 (w/standard and extended battery) with protective boot attached, and a spare battery (CT37 only). Support USB client via USB Type B connector. Can not recharge CT30 XP spare battery.



CT37-EB-UVB-2

CT37 booted ethernet base, for EU

Kit includes ethernet home base, EU power cord. For recharging one computer, CT30 XP or CT37(w/standard and extended battery) with protective boot attached, and a spare battery (CT37 only). Support USB client via USB Type B connector. Can not recharge CT30 XP spare battery.



CT37-EB-UVB-3

CT37 booted ethernet base, for UK

Kit includes ethernet home base, UK power cord. For recharging one computer, CT30 XP or CT37(w/standard and extended battery) with protective boot attached, and a spare battery (CT37 only). Support USB client via USB Type B connector. Can not recharge CT30 XP spare battery.



CT30P-DB-UVB-0

CT37/CT30 XP booted display base, standard

Kit includes display base, power supply, must order power cord separately. For recharging one computer, CT30 XP or CT37(w/standard and extended battery) with protective boot attached, connection with an external display, extending I/O for HDMI, Ethernet comm and 3 USB ports.



CT30P-DB-UVB-1

CT37/CT30 XP booted display base, for US

Kit includes display base, power supply, US power cord. For recharging one computer, CT30 XP or CT37(w/standard and extended battery) with protective boot attached, connection with an external display, extending I/O for HDMI, Ethernet comm and 3 USB ports.

CHARGERS, Continued

For booted terminals



CT30P-DB-UVB-2

CT37/CT30 XP booted display base, for EU

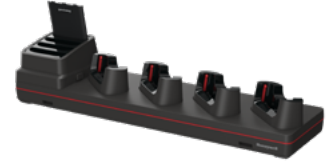
Kit includes display base, power supply, EU power cord. For recharging one computer, CT30 XP or CT37(w/standard and extended battery) with protective boot attached, connection with an external display, extending I/O for HDMI, Ethernet comm and 3 USB ports.



CT30P-DB-UVB-3

CT37/CT30 XP booted display base, for UK

Kit includes display base, power supply, UK power cord. For recharging one computer, CT30 XP or CT37(w/standard and extended battery) with protective boot attached, connection with an external display, extending I/O for HDMI, Ethernet comm and 3 USB ports.



CT37-5CB-UVB-BAT-0

CT37/CT30 XP booted 5-bay charging base, standard

Kit includes 5-bay charging base, power supply, no power cord. Charge up to 4 pcs computers with protective boot and 4 pcs batteries, compatible with CT30 XP and CT37(w/standard and extended battery).



CT37-5CB-UVB-BAT-1

CT37/CT30 XP booted 5-bay charging base, US

Kit includes 5-bay charging base, power supply, US power cord. Charge up to 4 pcs computers with protective boot and 4 pcs batteries, compatible with CT30 XP and CT37(w/standard and extended battery).



CT30P-UCP-B

CT37/CT30 XP universal cup

Kit includes a cup to be used for CT37 (w/standard and extended battery) and CT30 XP with protective boot. Charging docks, power supply and cables must be ordered separately.



CT30P-5CB-UVB-0

CT37/CT30 XP booted charging base, standard

Kit includes 5 bay charging base, power supply, must order power cord separately. For recharging up to 5 computers with protective boot, compatible with CT30 XP and CT37(w/standard and extended battery).



CT30P-5CB-UVB-1

CT37/CT30 XP booted charging base, for US

Kit includes 5 bay charging base, power supply, US power cord. For recharging up to 5 computers with protective boot, compatible with CT30 XP and CT37(w/standard and extended battery).



CT30P-5CB-UVB-2

CT37/CT30 XP booted charging base, for EU

Kit includes 5 bay charging base, power supply, EU power cord. For recharging up to 5 computers with protective boot, compatible with CT30 XP and CT37(w/standard and extended battery).



CT30P-5CB-UVB-3

CT37/CT30 XP booted charging base, for UK

Kit includes 5 bay charging base, power supply, UK power cord. For recharging up to 5 computers with protective boot, compatible with CT30 XP and CT37(w/standard and extended battery).

CHARGERS, Continued

For batteries



CT37-QBC-0

CT37/CT30 XP quad battery charger, Standard

Kit includes quad battery charger, power supply, power cord must be ordered separately. For recharging up to four CT30 XP or CT37 both standard and extended batteries.



CT37-QBC-1

CT37/CT30 XP quad battery charger, for US

Kit includes quad battery charger, power supply, US power cord. For recharging up to four CT30 XP or CT37 both standard and extended batteries.



CT37-QBC-2

CT37/CT30 XP quad battery charger, for EU

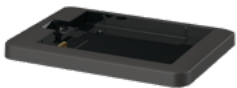
Kit includes quad battery charger, power supply, EU power cord. For recharging up to four CT30 XP or CT37 both standard and extended batteries..



CT37-QBC-3

CT37/CT30 XP quad battery charger, for UK

Kit includes quad battery charger, power supply, UK power cord. For recharging up to four CT30 XP or CT37 both standard and extended batteries.



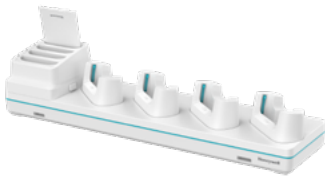
CT37-UCP-HBEB-BAT

CT37 Battery Cup for HomeBase/EthernetBase

CT37 battery cup for HomeBase and EthernetBase, compatible with CT37 standard and extended battery. It also can be installed on CT30 XP HomeBase(CT30P-HB) and EthernetBase(CT30P-EB) to charge CT37 battery. Can not charge CT30 XP battery.

CHARGERS, Continued

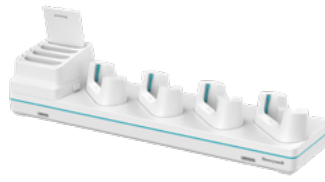
Healthcare chargers



CT37-5CB-UVN-HC0

CT37/CT30 XP non-booted 5-bay charging base

Kit includes 5-bay charging base and power supply. Must order power cord separately. Charge up to 4 pcs computers and 4 pcs batteries, compatible with CT30 XP and CT37 (w/standard and extended battery).



CT37-5CB-UVB-HC0

CT37/CT30 XP booted 5-bay charging base

Kit includes 5-bay charging base and power supply. Must order power cord separately. Charge up to 4 pcs computers with protective boot and 4 pcs batteries, compatible with CT30 XP and CT37 (w/standard and extended battery).



CT37-DB-UVN-HC0

CT37/CT30 XP non-booted display base

Kit includes display base, power supply, must order power cord separately. For charging one computer, connection with an external display, and extending I/O for HDMI, Ethernet comm and 3 USB ports, compatible with CT30 XP and CT37 (w/standard and extended battery).



CT30P-DB-UVB-HC0

CT37/CT30 XP booted display base

Kit includes display base, power supply, must order power cord separately. For charging one computer with protective boot attached, connection with an external display, extending I/O for HDMI, Ethernet comm and 3 USB ports, compatible with CT30 XP and CT37 (w/standard and extended battery).



CT37-QBC-HC0

CT37/CT30 XP quad battery charger

Kit includes healthcare quad battery charger and power supply. Must order power cord separately. For recharging up to four CT30 XP or CT37 both standard and extended batteries.



CT37-UCP-NHC

CT37/CT30 XP non-booted universal cup

Kit includes a cup to be used for CT30 XP and CT37 (w/standard and extended battery). Charging docks, power supply and cables must be ordered separately.



CT30P-UCP-BHC

CT37/30 XP booted universal cup

Kit includes a cup to be used for CT30 XP and CT37 (w/standard and extended battery) with protective boot. Charging docks, power supply and cables must be ordered separately.

POWER SUPPLIES



CT37-BTSC-001

Spare Battery Pack, Standard, DRH

CT37 disinfectant ready battery pack, 3846mAh, for use with CT37 disinfectant- ready configurations (last two digits in part number begin with D: CT37- xxx-xxxxDx). 1 piece per pack.



CT37-BTSC-001-2PK

Spare Battery Pack, Standard, DRH

CT37 disinfectant ready battery pack, 3846mAh, for use with CT37 disinfectant- ready configurations (last two digits in part number begin with D: CT37- xxx-xxxxDx). 2 pieces per pack.



CT37-BTEC-001

Spare Battery Pack, Extended, DRH

CT37 disinfectant ready battery pack, 5550mAh, for use with CT37 disinfectant- ready configurations (last two digits in part number begin with D: CT37- xxx-xxxxDx). 1 piece per pack.



CT37-BTEC-001-2PK

Spare Battery Pack, Extended, DRH

CT37 disinfectant ready battery pack, 5550mAh, for use with CT37 disinfectant- ready configurations (last two digits in part number begin with D: CT37-xxx-xxxxDx). 2 pieces per pack.



CT37-BTSC-002

Spare Battery Pack, Healthcare

CT37 healthcare battery pack, 3846mAh, for use with CT37 healthcare and white color computer configurations (last two digits in part number begin with H and W: CT37-xxx-xxxxHx and CT37-xxx-xxxxWx). 1 piece per pack.



CT37-BTSC-002-2PK

Spare Battery Pack, Healthcare

CT37 healthcare battery pack, 3846mAh, for use with CT37 healthcare and white color computer configurations (last two digits in part number begin with H and W: CT37-xxx-xxxxHx and CT37-xxx-xxxxWx). 2 pieces per pack.



50121667-001

Quad Base Power Supply

An 84 W power supply for use with four-bay charging base and four-bay net base. Requires country-specific line cord to be ordered separately.



50121666-001

Desktop Power Supply

A 36 W power supply for use with Ethernet home base, charge-only home base, and quad battery charger. Requires country- specific line cord to be ordered separately.



50136024-001

Desktop Power Supply

KIT, 5V/2A Power supply, Scanpal EDA50K/51/60/61K/70/71/52/5S. Mobility Edge CT40/CT60. Includes 5 PLUGS PACKED US, UK, AU, EU, IN adapters.

SCAN HANDLES



CT37-SH-UVN

CT37 Scan Handle, non-booted

CT37 scan handle, compatible with CT37(w/ standard and extended battery) without protective boot; compatible with non-booted chargers.

Not compatible with healthcare model (CT37-xxx-xxxxHx).



CT37-SH-UVB

CT37 Scan Handle, booted

CT37 scan handle compatible with CT37 (w/ standard and extended battery) with protective boot; compatible with booted chargers.

Not compatible with healthcare model (CT37-xxx-xxxxHx).

OTHER ACCESSORIES



CT37-HS-3PK

CT37 Hand Strap, Black

CT37 hand strap, 3pcs



CT37-HS-HC-3PK

CT37 Hand Strap, Grey

CT37 hand strap, 3pcs, healthcare



CT37-PB-STD

CT37 Protective Boot, Standard, Black

CT37 protective boot. It is compatible with booted universal docks (CT30P-xx-UVB, CT37-xx-UVB). Recommended for CT37-xxx-xxxxDx. Can not use on CT30 XP mobile computer



CT37-PB-GRY

CT37 Protective Boot, Grey

CT37 protective boot, grey. It is compatible with booted universal docks (CT30P-xx-UVB, CT37-xx-UVB). Recommended for CT37-xxx-xxxxWx and CT37-xxx-xxxxHx (not disinfectant ready). Can not use on CT30 XP mobile computer



CT37-CLIP-LAN-STD

CT37 Carrying Clip, Black

CT37 carrying clip. Snaps on top of CT37 terminal of WLAN configuration (CT37-XON-xxxxDx) 1 piece is included in the kit



CT37-CLIP-LAN-HC

CT37 Carrying Clip, white, Healthcare

CT37 healthcare carrying clip. Snaps on top of CT37 terminal of WLAN configurations (CT37-XON-xxxxHx and CT37-XON-xxxxWx). 1 piece is included in the kit.



CT37-WS-KIT

CT37 Wearable Kit

CT37 wearable kit.
Not compatible with CT37 protective boot.
Not compatible with CT30 XP.



CT37-WS-KIT-01

CT37 Wearable Kit, Spare Armband

CT37 wearable kit, spare armband.
3 pieces per pack.



CT37-WS-KIT-02

CT37 Wearable Kit, Spare Rubber Pad

CT37 wearable kit, spare rubber pad.
2 pieces per pack

OTHER ACCESSORIES, Continued



CT37-WS-KIT-03

CT37 Wearable Kit, Spare Sled
CT37 wearable kit, spare sled.
2 pieces per pack.



CT37-USBC-PLUG-5PK

CT37 USB-C Plug, Healthcare
CT37 USB-C Plug.
Recommended for CT37-xxx-xxxxHx
5 pieces per pack.



IH45-BK-37S

IH45 bracket for CT37, Non-booted
IH45 bracket for non-booted CT37 (w/
standard and extended battery).
Not compatible with protective boot.
4 screws are shipped with bracket as a kit.



MBL-HDST-USBC

Mobility USBC Headset
Mobility headset with PTT, USB-C interface



CT37-SP-1PK

CT37 Screen Protector
CT37 screen protector, 1 piece per pack.
Can be used with stylus.

SD CARDS

856-065-004

Industrial-Grade Micro-SD Card*
Micro-SD card, 1 GB, AFIGUDI, RoHS

856-065-005

Industrial-Grade Micro-SD Card*
Micro-SD card, 2 GB, AFIGUDI, RoHS

856-065-006

Industrial-Grade Micro-SD Card*
Micro-SD card, 4 GB, AFIGUDI, RoHS

856-065-007

Industrial-Grade Micro-SD Card*
Micro-SD card, 8 GB, AFIGUDI, RoHS

* Micro-SD cards are required when databases are stored on the device. The database should be stored on the SD card.

AC LINE CORDS

50127245-001

Power Cord – India

Power cord, India, 1.5 m (4.9 ft)

50117501-001

Power Cord – Australia

Power cord, Australia, 2.5 m (8.2 ft)

50117503-001

Power Cord – CB

Power cord, Argentina, Isled CB

77900506E

Power Cord – US

Power cord, U.S., IEC320-C13, 1.85 m (6.07 ft)

77900507E

Power Cord – UK

Power cord, UK, IEC320-C13, 2.5 m (8.2 ft)

77900508E

Power Cord – EU

Power cord, Europe, IEC320-C13, 2.5 m (8.2 ft)

19-19807

Power Cord – China

Cable, China cord set (CCC), 2.5 m (8.2 ft)

130063

Power Cord – US

Cable, power cord/IEC, U.S., 2.5 m (8.2 ft)

For more information

automation.honeywell.com

Honeywell Industrial Automation

855 S Mint Street,
Charlotte, NC 28202
800-582-4263
www.honeywell.com