

G44 5-in-1 Series

Multi-Band Antenna
GPS + 3G/4G/LTE
and/or P25 & WiFi

RFMAX

The RFMAX G44WW-17SSRR is a versatile 5-in-1 roof mount vehicular antenna with (1) GPS element + (2) 698-2700 MHz elements for 3G/4G/LTE + (2) WiFi/WLAN elements for enhanced cellular and FirstNet/P25 performance. This rugged, low profile antenna is optimized for use with today's high data-rate cellular modems, including Sierra Wireless, Cradlepoint, Multi-Tech, and Pepwave. The G44 antenna is ideal for transit buses, utility trucks, vans, or for public safety vehicles. Includes stainless steel stud for through-roof or trunk mounting or use G44-HDMM for magnetic mounting (sold separately)



G44 5-in-1 Series

Multi-Band Antenna
GPS + 3G/4G/LTE
and/or P25 & WiFi



Features:

- Two ports of 698-960/1695-2170/2300-2700/2900-3600 MHz with SMA-Male Connectors for 3G/4G/LTE or FirstNet/P25
- Two ports of 2.4 & 5 GHz High Speed WiFi with SMA-Male Connectors
- One port of GPS / Glonass:1575.42-1609 MHz with SMA-Male Connector.
- Humidity Rating: 95%RH @ +25°C for 12h and 55°C for 12h
- Vibration Rating: MIL-STD 810G, section 514.6 5-500 Hz, 60min/axis
- Thermal Shock Rating: MIL-STD 810G, section 503.5 -40 to +85°C, 3 cycles
- Drop Test: Minimum of one drop per axis – 4 drops from 1 meter
- TWO Year RFMAX Warranty
- Direct Mount stainless steel stud, washer & M22 split nut
- Optional magnetic mount (see part # [G44-HDMM](#))



Applications:

- Energy / Utility Vehicles (phone company, water, electric, gas, cable TV)
- FirstNet Public Safety / First Responders (Ambulance, Fire, Police)
- Fleet Management & Taxi Cabs
- Location Based Services & Fixed Site Telematics
- Pre-tested for use with today's high speed cellular modems/gateways/routers and FirstNet/P25 radio systems

www.rfmax.us

Rev. 06/2017



G44 5-in-1 Series

Multi-Band Antenna
GPS + 3G/4G/LTE
and/or P25 & WiFi



Electrical Specifications

Port 1+2 Cellular/P25/FirstNet Frequency	698-2700 MHz
Port 3+4 WiFi Frequency	2400-2500/4900-5900 MHz
Port 5 GPS/GNSS/LNA Frequency	1565-1610 MHz
Port 1+2 Cellular/P25/FirstNet Gain	4 dBi (± 2.5)
Port 3+4 WiFi Gain	4.5 dBi (± 2.0)
Port 5 GPS/GNSS/LNA Gain	31 dB (± 1)
Port 1+2 Cellular/P25/FirstNet VSWR	<1.5
Port 3+4 WiFi VSWR	<1.4
Port 5 GPS/GNSS/LNA VSWR	1.6

** Gain is measure on
2-ft ground plane
with 4-inch cable

Impedance	50 Ohm
Max Power	40 W
Polarization	Cellular/P25/FirstNet/WiFi: Vertical GPS/GNSS: Circular
Direction	Omni
Isolation	Cellular/P25/FirstNet: 15 dB or better WiFi: 40 dB or better

G44 5-in-1 Series

Multi-Band Antenna
GPS + 3G/4G/LTE
and/or P25 & WiFi



GPS/LNA Specifications

Gain	31 dB
Noise Figure	2.5 dB
Current Draw	8 mA
Voltage	3-5 Vdc
Max Power	20 W



SMA-Male



RPSMA-Male

Environmental Specifications

Operating Temperature [°C]	-40 / +85
Rating	IP67

Mechanical Specifications

Color	Black or White
Weight	940 g
Length and Width	6.5 / 6 in
Thickness	3 in
Mounting	Direct or Magnetic
Connector Type	SMA Male / RPSMA Male
Cable Types	RG-58 RG174
Cable Length	17 ft*

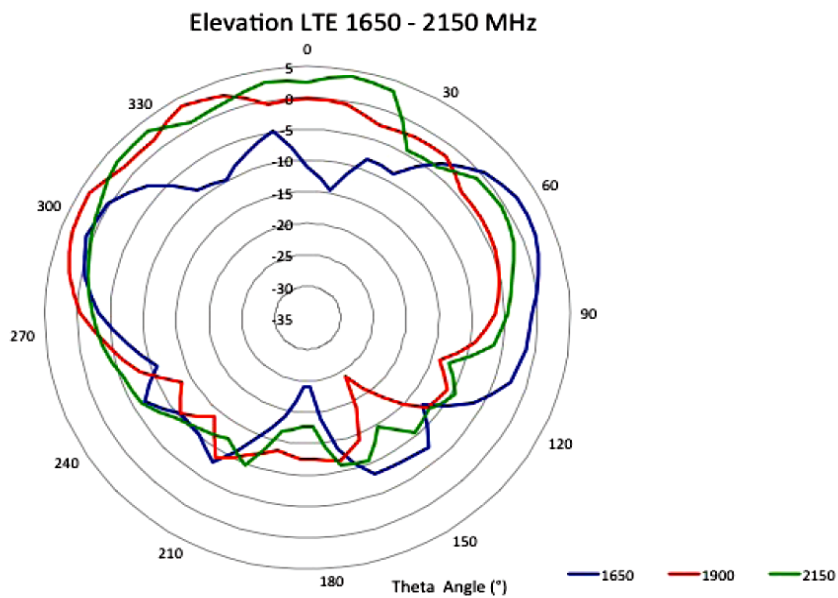
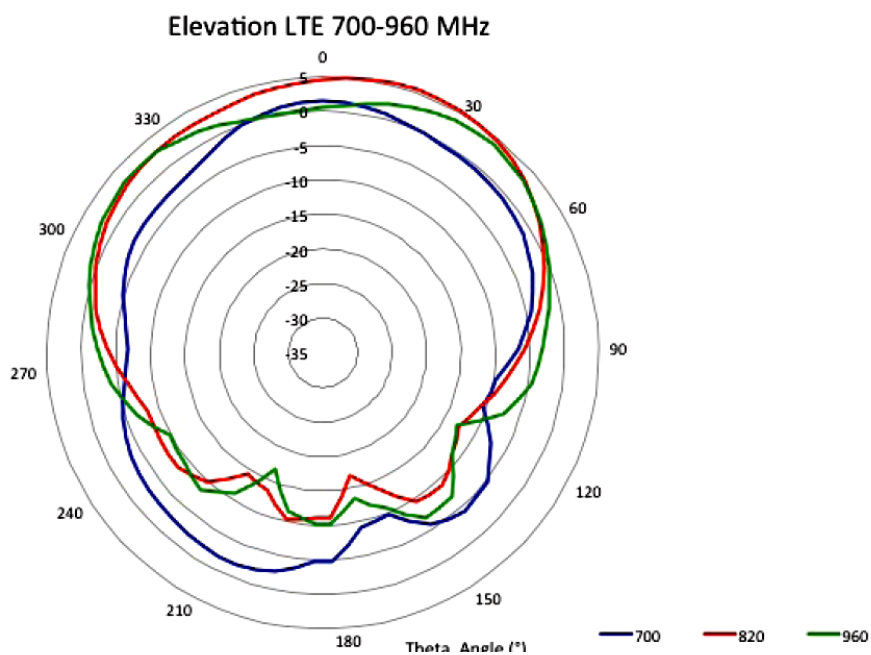
*Custom length available with minimum quantity order of 500 pcs

SKU	Description
G44WW-17SSRR	5-in-1 Black Antenna
G44WW-17SSRR-WHT	5-in-1 White Antenna
G44-HDMM	Heavy Duty Magnetic Mount

G44 5-in-1 Series

Multi-Band Antenna

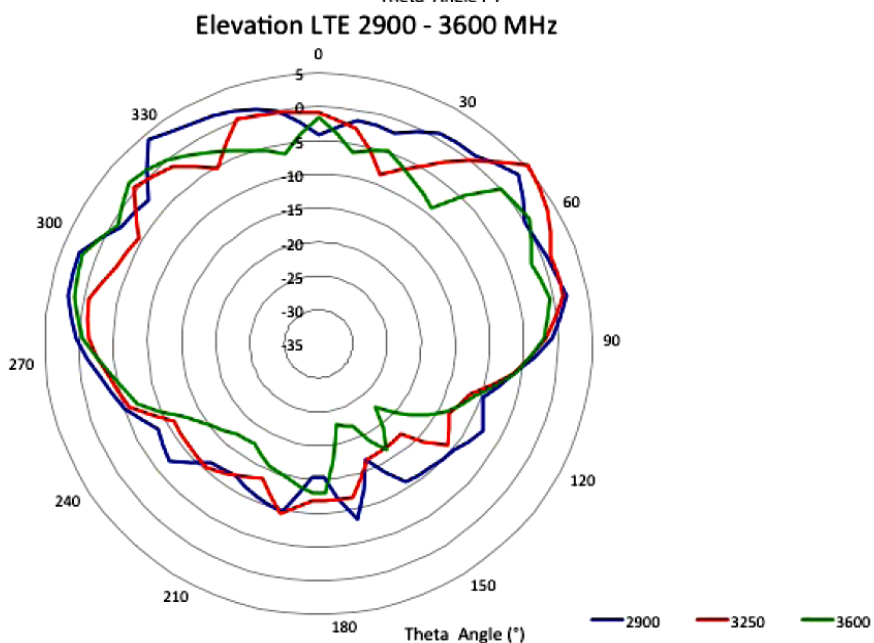
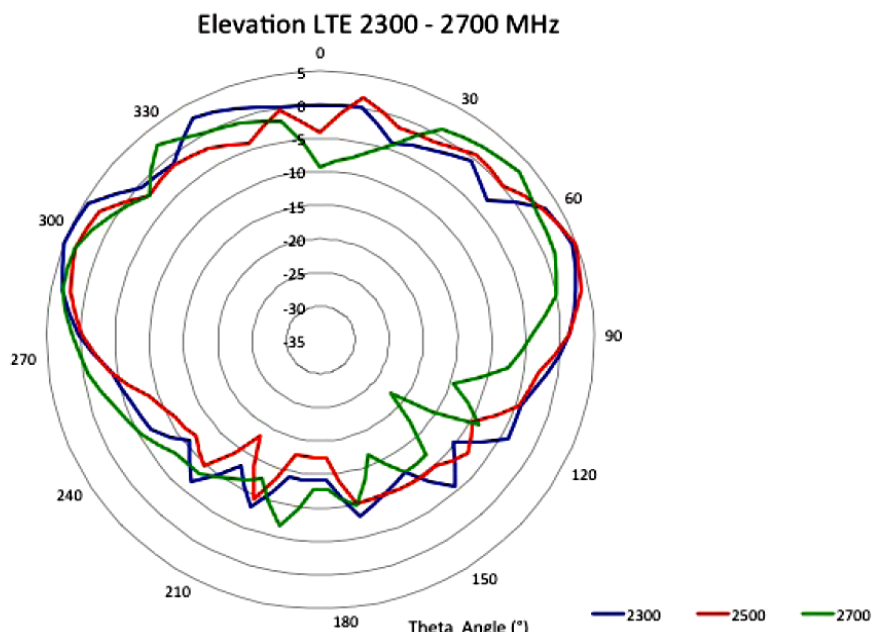
GPS + 3G/4G/LTE
and/or P25 & WiFi



G44 5-in-1 Series

Multi-Band Antenna

GPS + 3G/4G/LTE
and/or P25 & WiFi



G44 5-in-1 Series

Multi-Band Antenna

GPS + 3G/4G/LTE
and/or P25 & WiFi

